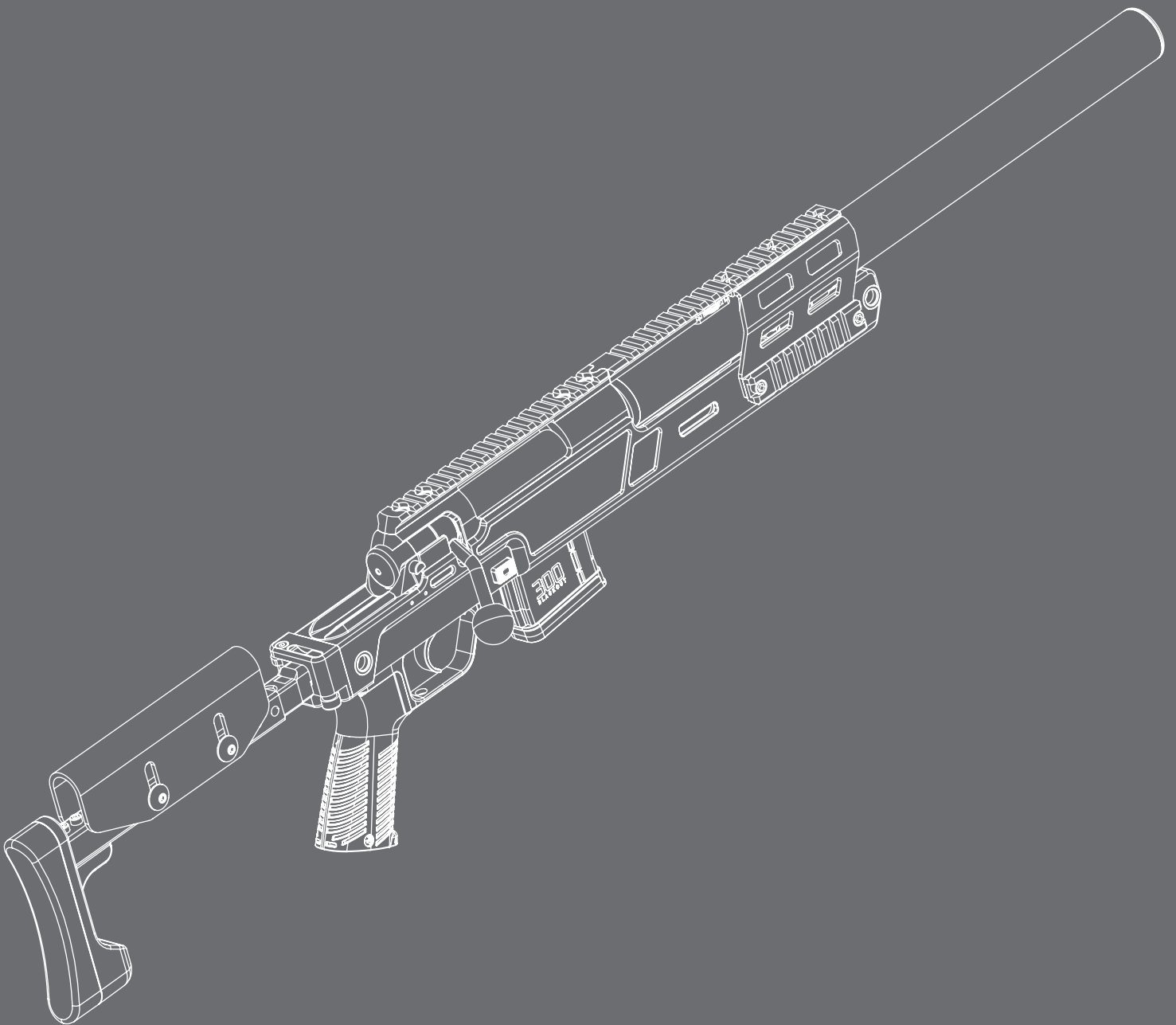




SPR 300 PRO



TECHNICAL MANUAL

WARNINGS

- Do not load or fire this airsoft gun until you have completely read this manual and are familiar with its safety features, mechanical operation, and handling characteristics.
- Handle this and any airsoft gun as if it were loaded at all times.
- Keep your finger off of the trigger until ready to shoot.
- Do not look down the barrel of a airsoft gun. Accidental discharge into the eyes may cause permanent injury or death.
- Keep the airsoft gun on safe until ready to shoot.
- Keep the barrel plug (user supplied) installed on airsoft gun when not shooting.
- Never point the airsoft gun at anything you do not intend to shoot.
- Never fire your airsoft gun at anything you do not intend to shoot because there may be BBs or foreign debris lodged in the chamber, and / or barrel
- Do not shoot at fragile objects such as windows.
- Never fire your airsoft at personal property of others
- Always keep the muzzle pointed in a safe direction, even if you stumble or fall.
- Eye, face, and ear protection designed specifically to stop BBs in the form of approved goggles, and face protection should be worn by the user and any person within range.
- Never shoot at a person who is not protected by eye, face, and ear protection designed for airsoft.
- Before storing or disassembling, be sure to point your airsoft gun in a safe direction, fire several times to be sure there are no BBs lodged in the chamber and / or barrel. Install barrel plug.
- Store the airsoft gun unloaded in a secured place.
- Use only high quality new 6mm BBs. Used or damaged BBs may cause a malfunction.
- Avoid alcoholic beverages before and during the use of this airsoft gun Handling airsoft guns while under the influence of drugs or alcohol is a criminal disregard for public safety.
- Avoid shooting an opponent at point blank, 2 Meters or less.

SPECIFICATIONS

SKU:	BTA-SG-SPR-BK/DE
Product Name:	SPR 300 PRO
Colors:	Black / Tan
Materials:	Aluminum / Polymer
Finish:	Hard Coat Anodized
Power Source	Spring
Length:	740 / 990mm
Weight:	2700g
Barrel Length:	300mm
Magazine Capacity:	50RDs

Power:				
	< 0.98J	< 2.0J	< 2.3J	< 2.9J

MANUFACTURER INFORMATION

ARCHWICK Company of New Taipei City, Taiwan was founded in 2019. It specializes in airsoft guns, accessories, and other upgrade parts. It prides itself on making products of exceptional quality and value.

UNDER PROMISE,
OVER DELIVER

This is the ARCHWICK way.



The B & T Logo and all intellectual properties associated with this replica airsoft product are used under license by B & T AG of Thun, Switzerland. For more information on B & T AG and its products, visit: www.bt-ag.ch



MANUFACTURED
IN TAIWAN



For more information on ARCHWICK / B & T Air, visit us online or follow us on:



Thank you for choosing B & T Air! Your SPR 300 PRO Spring Powered Bolt Action Rifle requires some minor assembly before it is ready for use. Please follow this guide or scan the QR code below for our instructional videos.

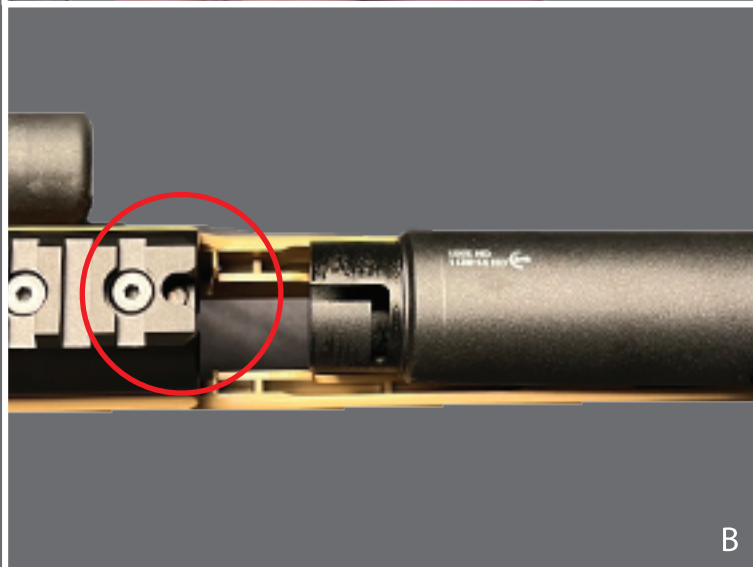


SAFETY

EXCEPT WHEN AIRSOFT GUN IS IN USE, ALWAYS MAKE SURE THAT THE BARREL PLUG IS INSTALLED AND THE SELECTOR SWITCH IS IN SAFE MODE, WHICH DISABLES THE TRIGGER.

A line drawing of the rifle's receiver area. A circular callout above the bolt handle shows a green arrow pointing up and a red arrow pointing down. A red dot on the receiver indicates the primary safety switch. The words "SAFE" and "FIRE" are printed below the switch.	<p>The SPR 300 PRO has a dual safety system, the PRIMARY SAFETY SWITCH and a SECONDARY BOLT SAFETY LEVER.</p> <p>These 2 safety systems work in conjunction with each other to ensure that the gun will NOT fire unless both systems are deactivated.</p> <p>The PRIMARY SAFETY SWITCH is the standard safety switch. Toggle the switch forward into the "FIRE" mode to fire; back into the "SAFE" mode for safe.</p> <p>The SECONDARY BOLT SAFETY LEVER is activated when the bolt handle is in the "UP" position. The system is deactivated when the bolt handle is in the "DOWN" position.</p> <p>ONLY when both the bolt handle is DOWN, and the PRIMARY SAFETY SWITCH is in the "FIRE" position can the gun be fired.</p>
<p>SAFE FIRE</p>	
A line drawing of the bolt handle with a green arrow pointing left and a red arrow pointing right, indicating the safe and fire positions.	
A line drawing of the trigger mechanism.	

STEP 1. Barrel Installation



- A. Remove the bridge system that is already installed in the stock, push the front release button on the stock, and the release latch of the bridge to unlatch the bridge.
- B. Hold barrel with locking slot facing up as shown, insert into the action, and twist clockwise to lock it into place.
- C. Once the barrel is installed properly, the hop up dial should point directly up as shown.
- D. Install front barrel locking screw with 3mm Allen Wrench.
- E. Turn the gun over to the left side and tighten the barrel locking bolt with 3mm Allen Wrench. (screw is already inside the stock)

NOTE: DO NOT OVERTIGHTEN SCREWS! OVERTIGHTENING THE SCREWS MAY CAUSE BARREL MIS-ALIGNMENT. ONLY TIGHTEN SCREWS UNTIL FINGER SNUG.

STEP 2. Bolt Assembly Installation



- A. Insert Bolt Assembly into the back of the action as shown. The Bolt Assembly will only go in a short distance before it stops.
- B. Toggle Primary Safety Latch into the "FIRE" position, push down on the SECONDARY BOLT SAFETY LEVER, and pull the trigger. Hold the trigger down and push the bolt assembly the rest of the way into the action. Release the trigger and toggle the Safety Latch back to the "SAFE" position.
- C. Insert Spring Guide Stopper into the the bottom of the stock as shown. Make sure to push the Spring Guide Stopper all the way into the Bolt Assembly.

STEP 3. Choosing and loading the magazine

Your SPR 300 PRO can feed from 1 of 2 different magazine platforms, both of which are included with your purchase. You can either choose the VSR style magazine, or the 300 Blackout style magazine. You can ONLY use one magazine type at a time.



3A.) Loading VSR Style Magazine

- A. Load magazine with self supplied BB loading tool to full capacity. Do NOT overfill.
- B. Insert magazine into the front magazine well when ready to use. Push the front of the magazine up into the magwell until you hear an audible "click".
- C. To remove the magazine, press the front magazine release button located directly in front of the magazine. The magazine will drop freely once the button is depressed.

3A.) Loading 300 Blackout Style Magazine



- A. Load magazine with self supplied loading tool to full capacity. Do NOT overfill.
- B. Insert magazine into the back magazine well when ready to use. Push the magazine up into the magwell until you hear an audible "click".
- C. To remove the magazine, press and hold the magazine release button on either side of the rifle stock and pull the magazine out.

NOTE:

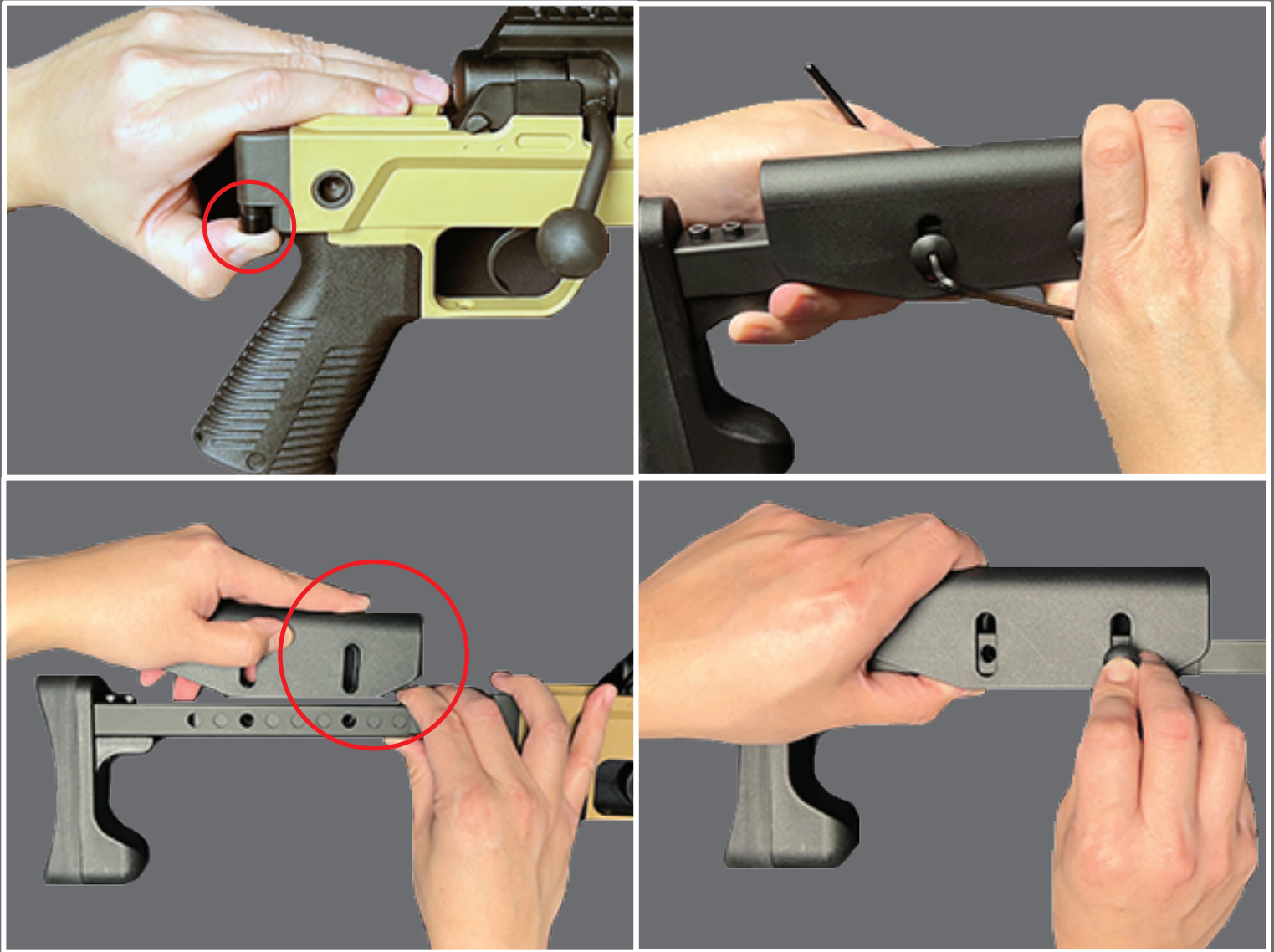
The first time the magazine is loaded into the gun, approximately half of the BBs will fill up the bridge. These rounds will not feed into the gun. To top up the magazine, remove the magazine and repeat the fill process.

STEP 4. Rail Adaptor Installation (Optional)



- A. Arrange rail adaptor as shown, and slide the rail adaptor against the top rail of the action.
- B. Place side rails on the sides of the rail adaptor, insert screws, and tighten with 4mm Allen Wrench. The side rails can also be installed on their own, without the use of the rail adaptor.

Step 5: Adjusting the stock and cheekrest



- A. Push down on the stock release button and pull the stock open.
- B. Remove the cheekrest screws with 2x 4mm Allen Wrenches. The screws will counter-rotate against each other.
- C. With the screws removed, adjust the stock to the desired length, place cheekrest over the stock tube, and re-install the cheekrest screws by hand. Adjust cheekrest to the desired height, and tighten screws with Allen Wrenches.

NOTE:

WHEN THE STOCK IS IN THE FOLDED POSITION, THE SIDE OF THE CHEEKREST SCREW CAN ENGAGE THE MAGAZINE RELEASE, CAUSING THE MAGAZINE TO DROP OUT. THIS IS NOT A MALFUNCTION BUT RATHER A SAFETY FEATURE. THE GUN IS NOT DESIGNED TO BE FIRED WITH THE STOCK FOLDED. THE STOCK IS MEANT TO BE FOLDED ONLY WHEN THE MAGAZINE IS REMOVED AND THE GUN IS CLEARED FOR STORAGE OR TRANSPORTATION.

CAUTION:

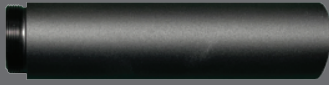
THE CHEEKREST IS NOT SYMMETRICAL BY B & T'S DESIGN, WHICH MEANS THAT ONE SIDE IS LONGER THAN THE OTHER. WE RECOMMEND THAT THE CHEEKREST BE INSTALLED WITH THE SHORTER SIDE FACING THE FRONT OF THE GUN FOR MAXIMUM CLERANCE. THIS IS TO AVOID THE POSSIBILITY OF THE USER'S HAND STRIKING THE FRONT OF THE CHEEKREST WHEN THE BOLT IS PULLED BACK.

Step 6: Installing Optics and Accessories

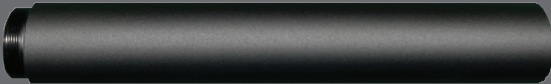
The SPR300 PRO has a 1913 Standard rail on top of the action for the installation of optics. There are multiple M-Lok mounting points on the front and sides of the stock. There are also multiple Quick Detach sling mounting points on either side of the stock.

Optional B & T Air Factory Upgrades

BTA-UGK-001
130mm Barrel Extension



BTA-UGK-002
210mm Barrel Extension

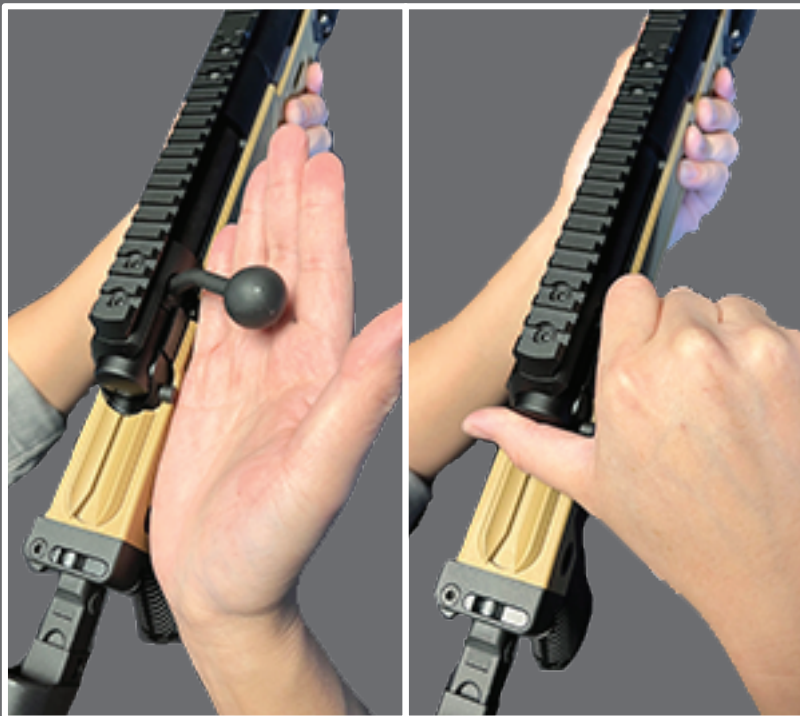


BTA-UGK-003
1913 Stock Rail Adaptor



BTA-UGK-004
Inner Barrel Holder / Stabilizer
(Sold in packs of 5)

Step 7: Cocking The SPR 300 PRO



- Lift bolt handle up to the top position.
- Place your thumb directly behind the bolt, and place your hand over the bolt handle and as close to the action as possible.
- Grip the cocking handle firmly, and pull the bolt straight back towards your body. Pull until the sear engages and the spring tension has eased.
- Push the bolt straight back into the action, and rotate the bolt handle to the down position.
- Push the Primary Safety Latch forward to the "Fire" position, and pull the trigger when ready to shoot.

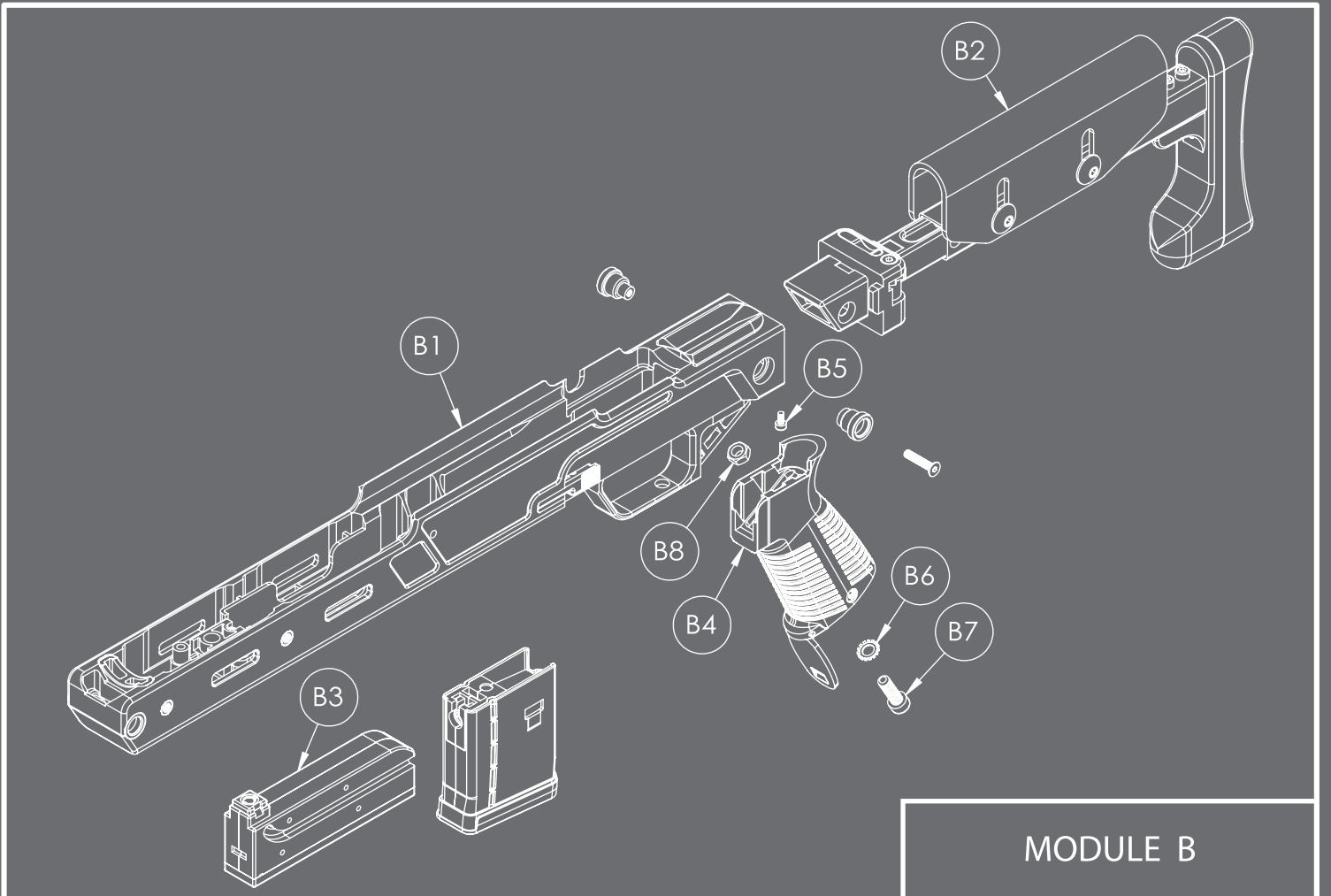
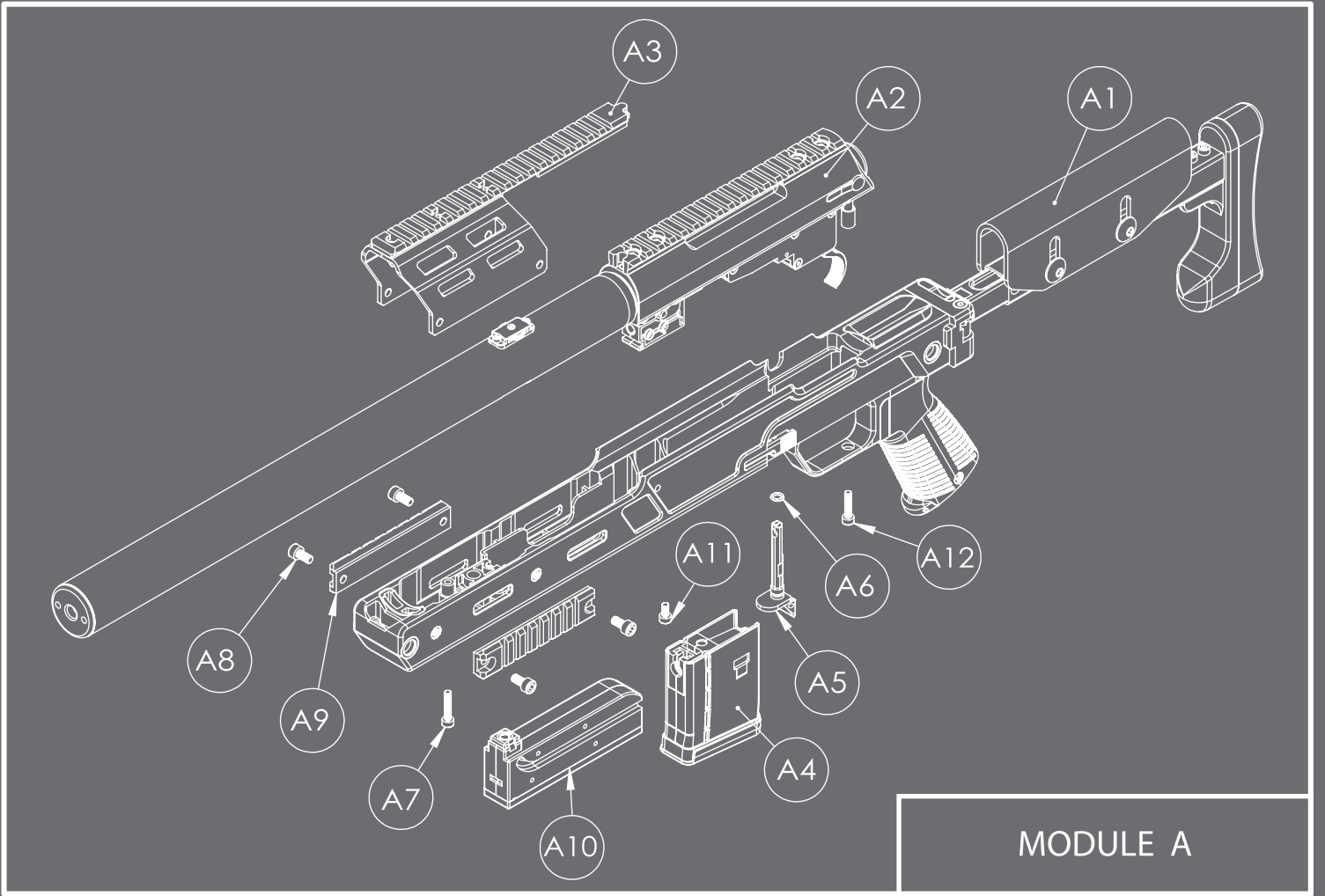
Step 8: Adjusting the Hop Up

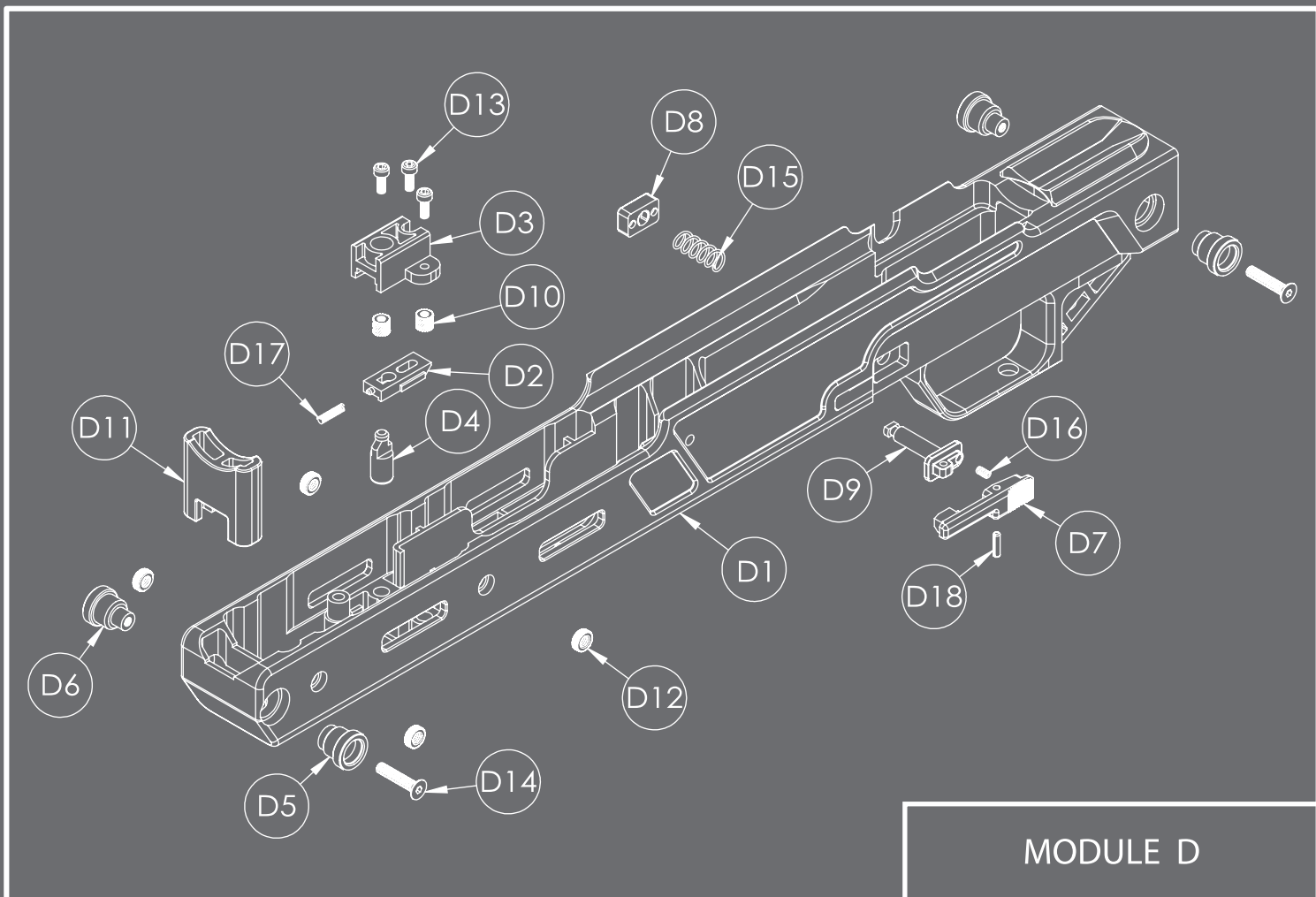
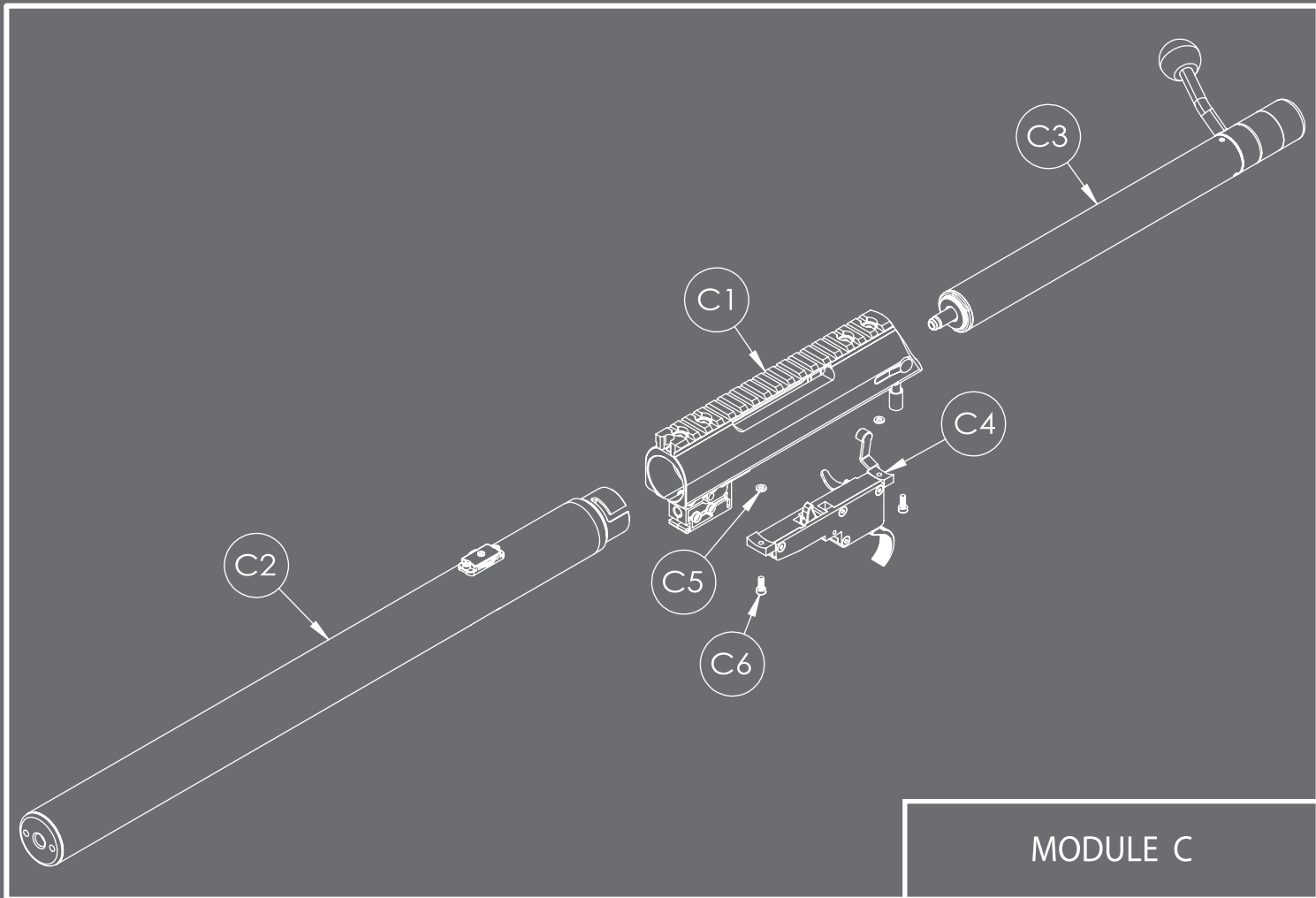


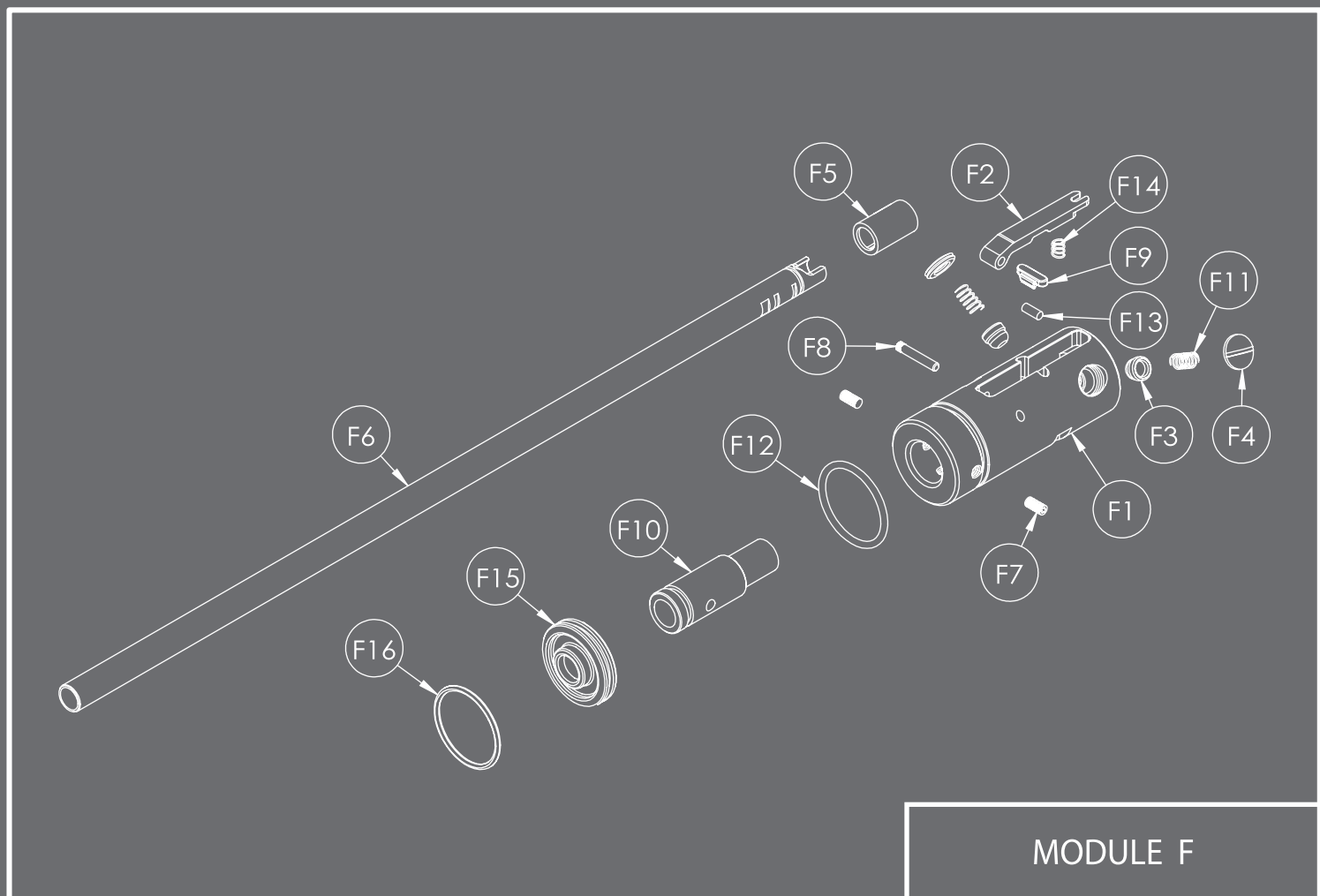
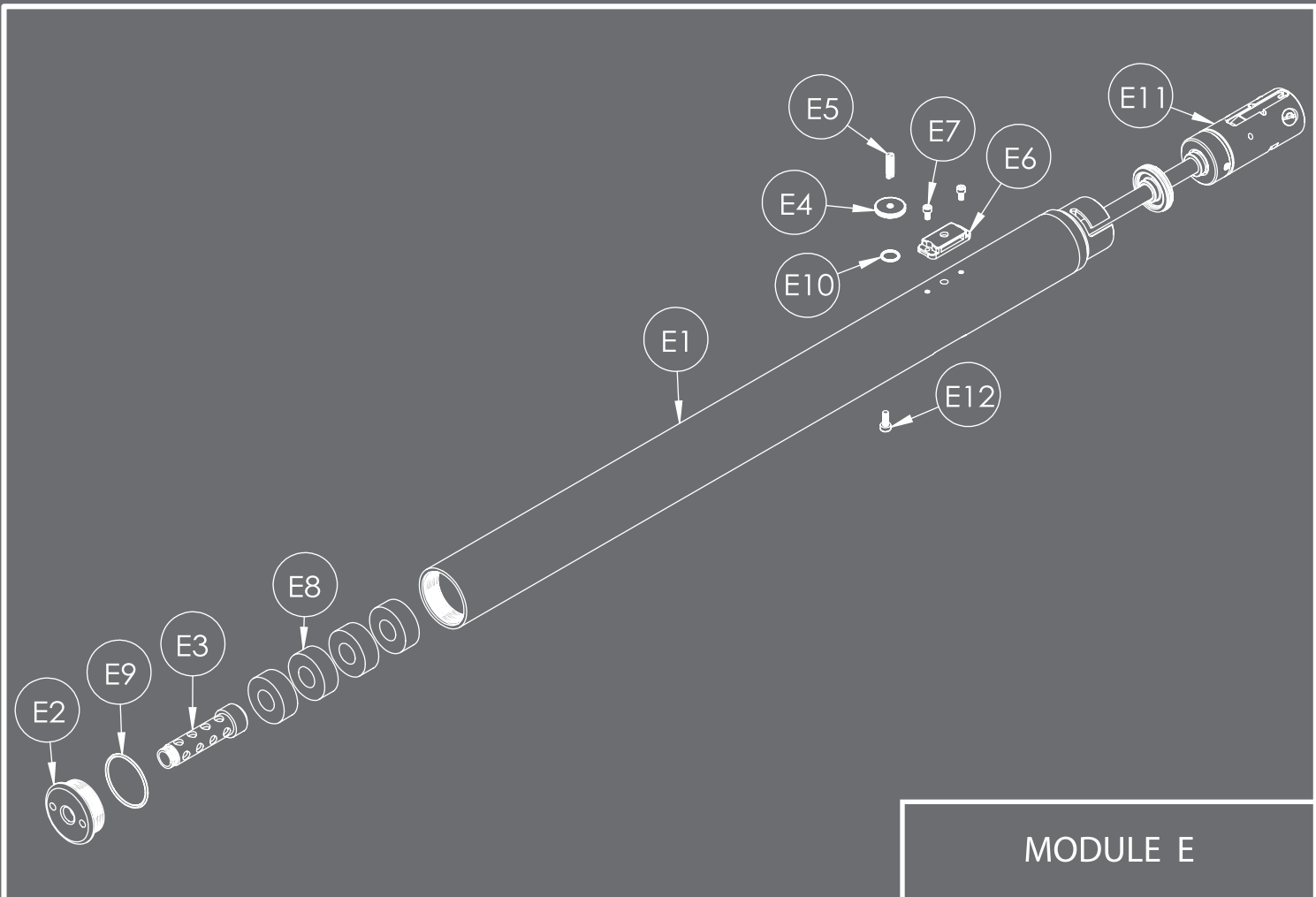
The Hop Up Adjustment Dial is located directly on top of the barrel. The hop up can be adjusted with either the rail adaptor on or off.

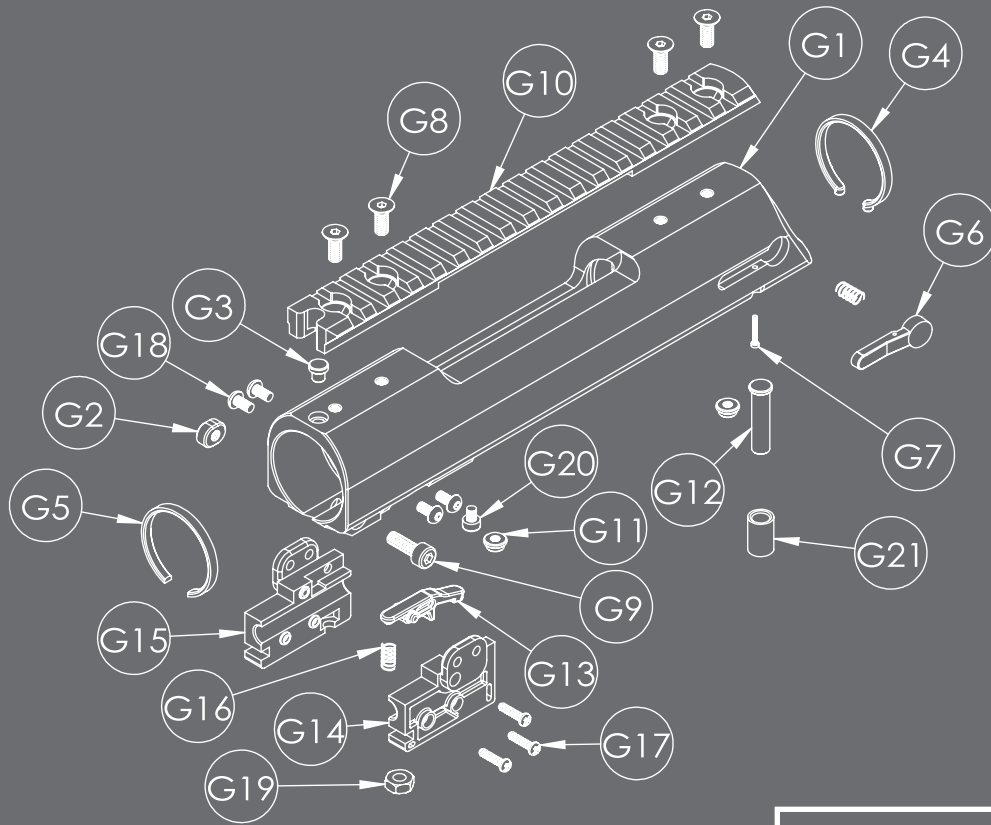
The adjustment is completely toolless, and is only done by hand.

Turn dial **CLOCKWISE** to **DECREASE** hop up;
COUNTER CLOCKWISE to **INCREASE**.

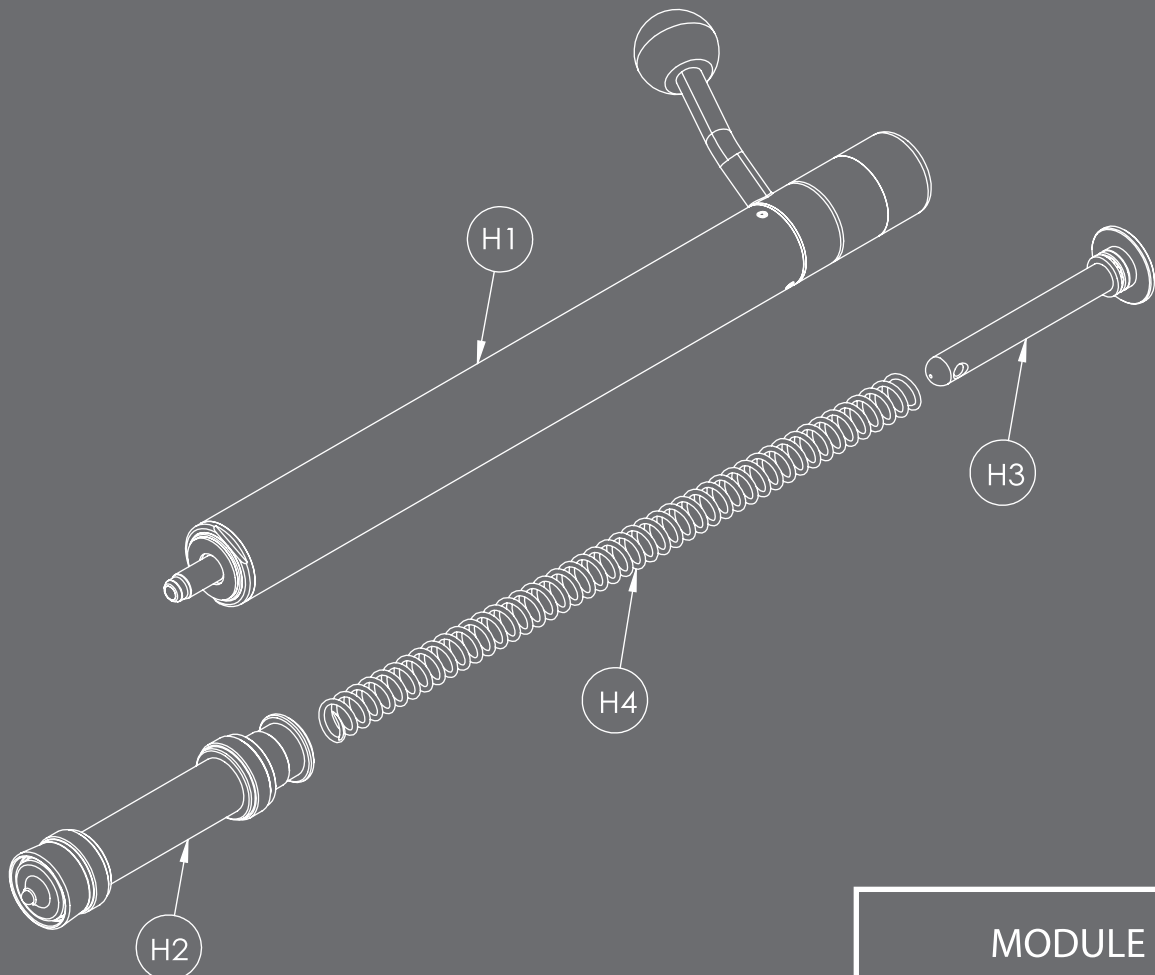




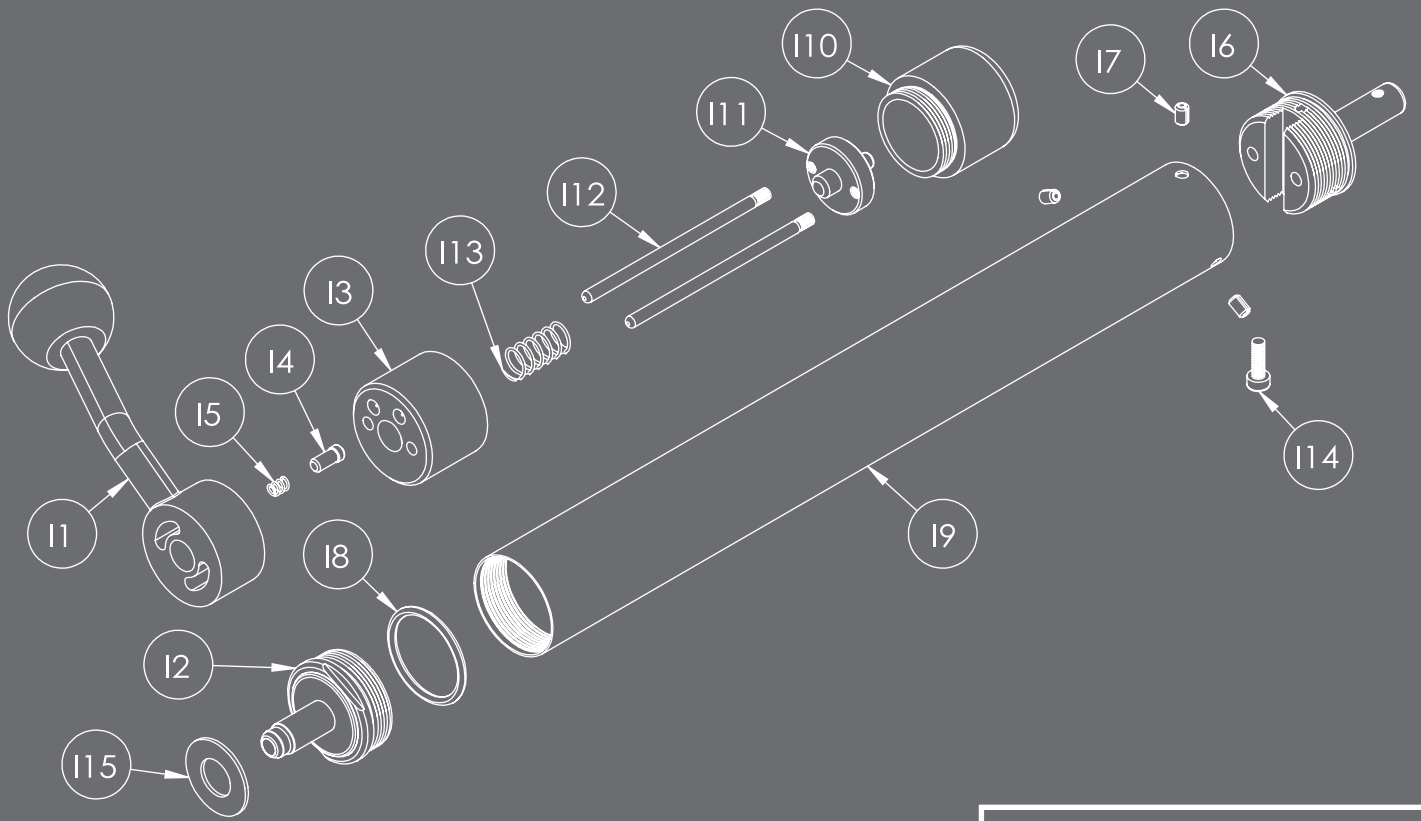




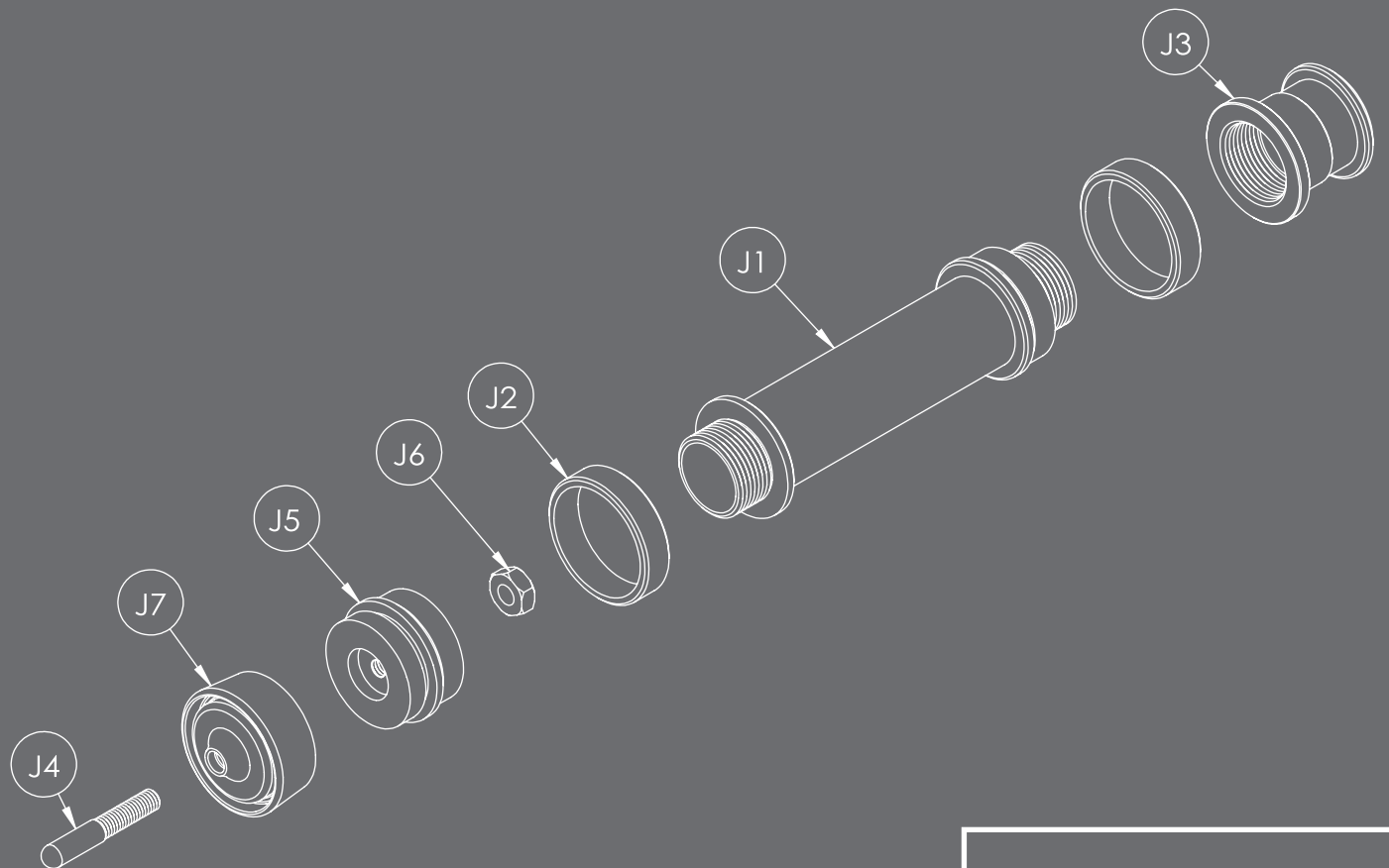
MODULE G



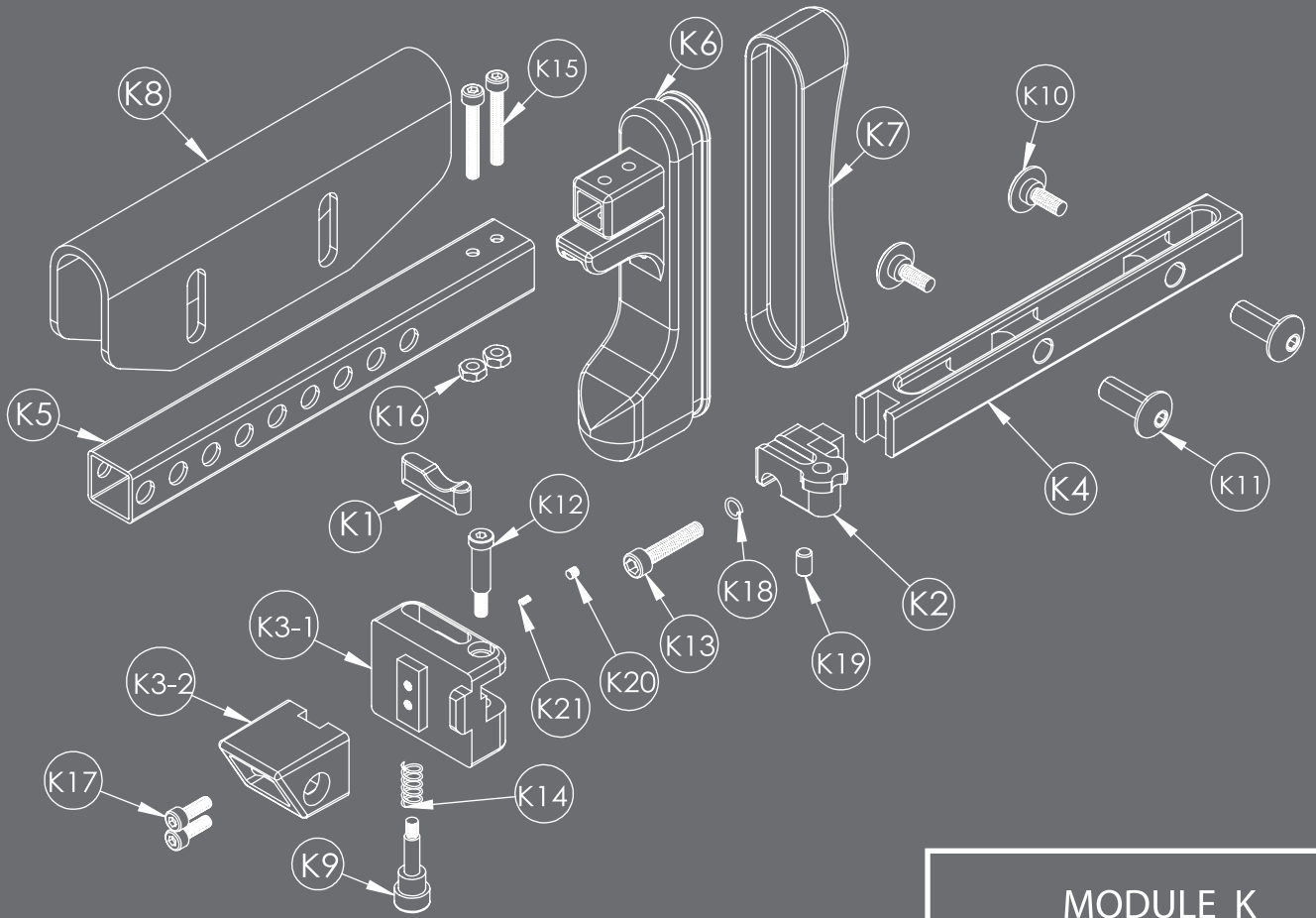
MODULE H



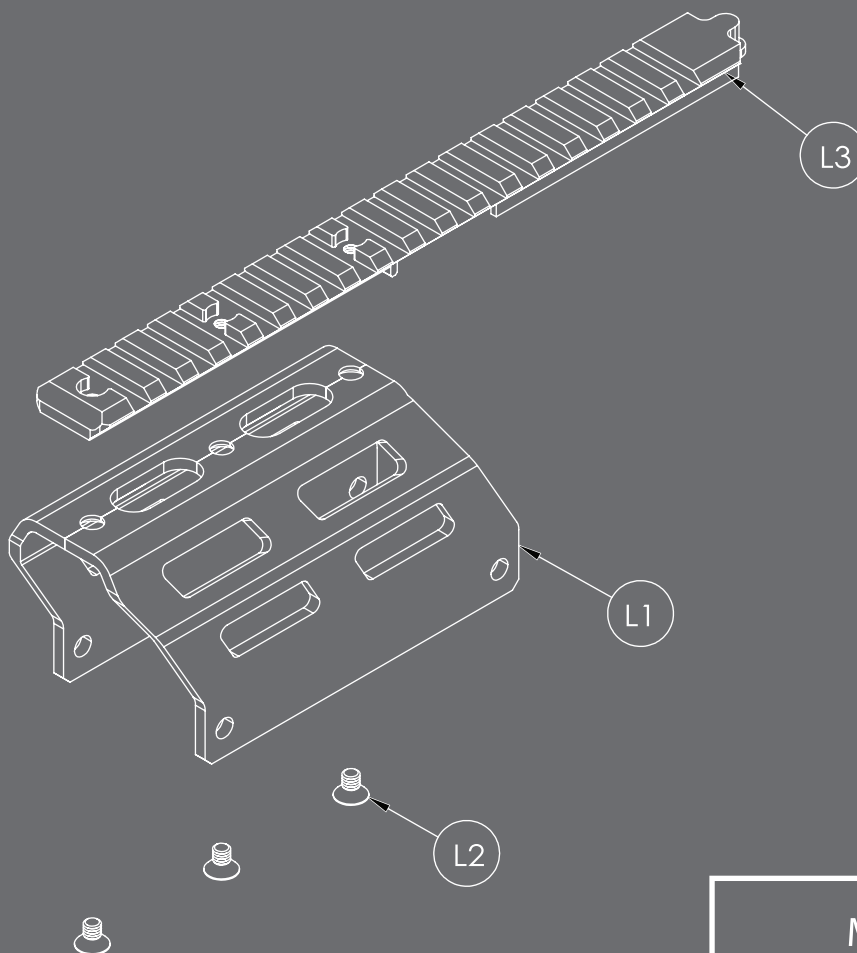
MODULE I



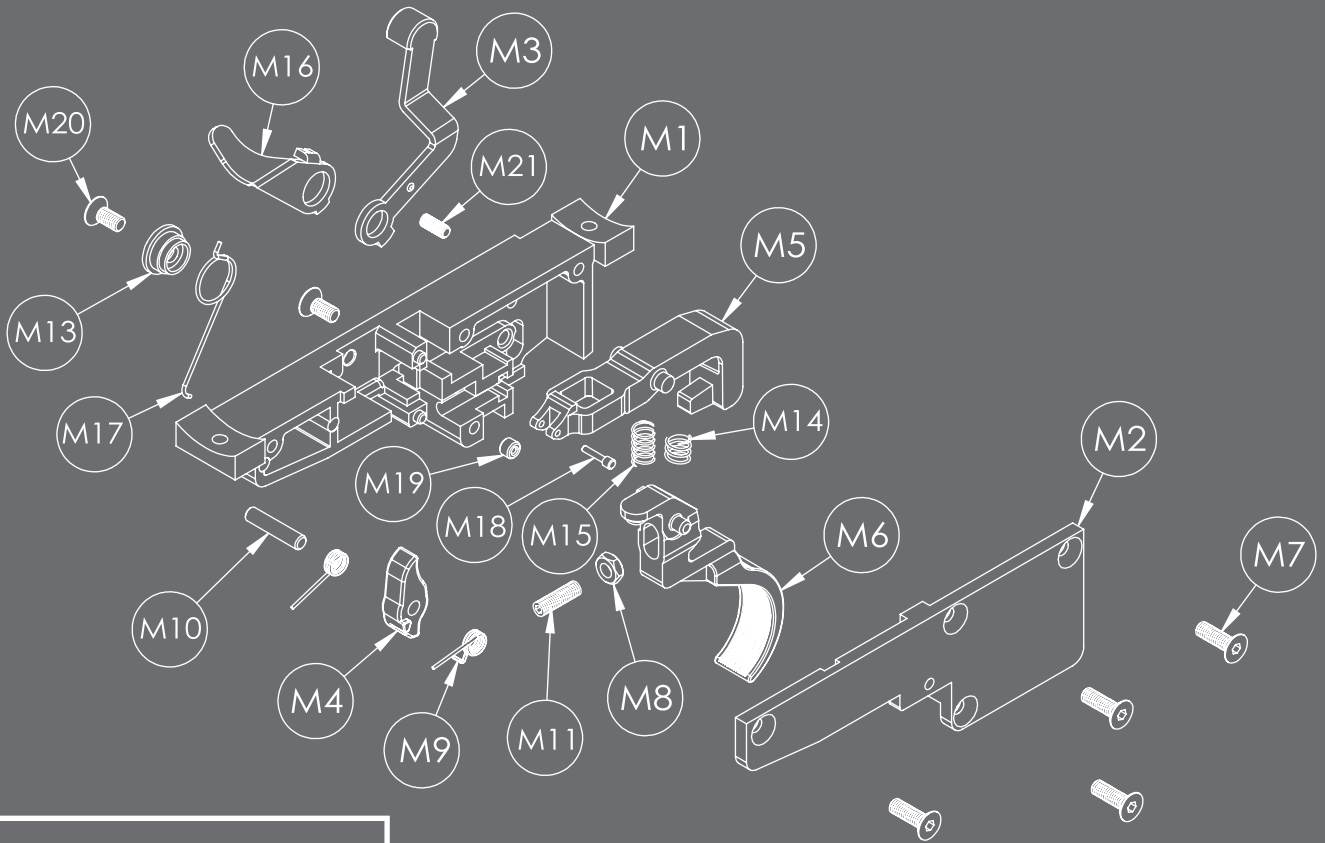
MODULE J



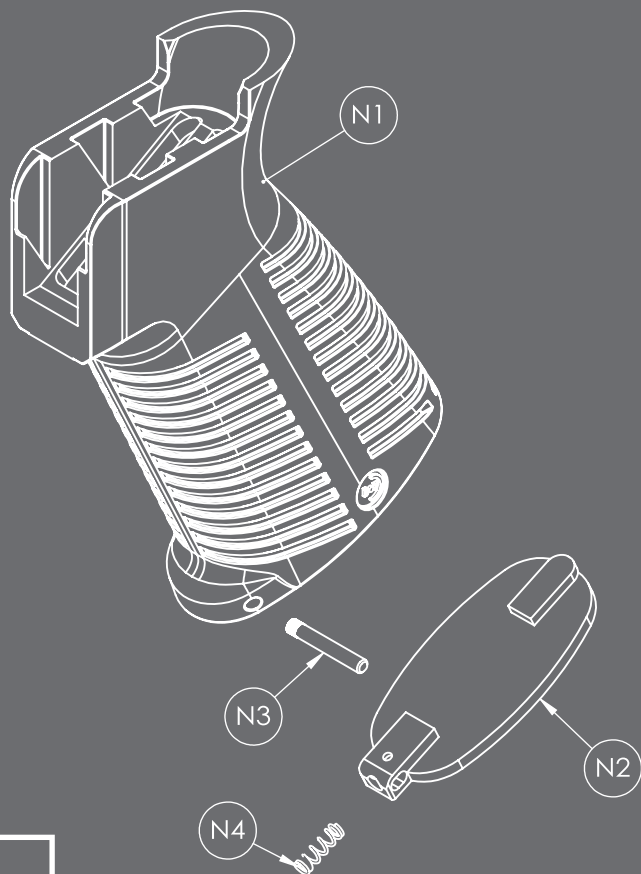
MODULE K



MODULE L



MODULE M



MODULE N

